

Model Number

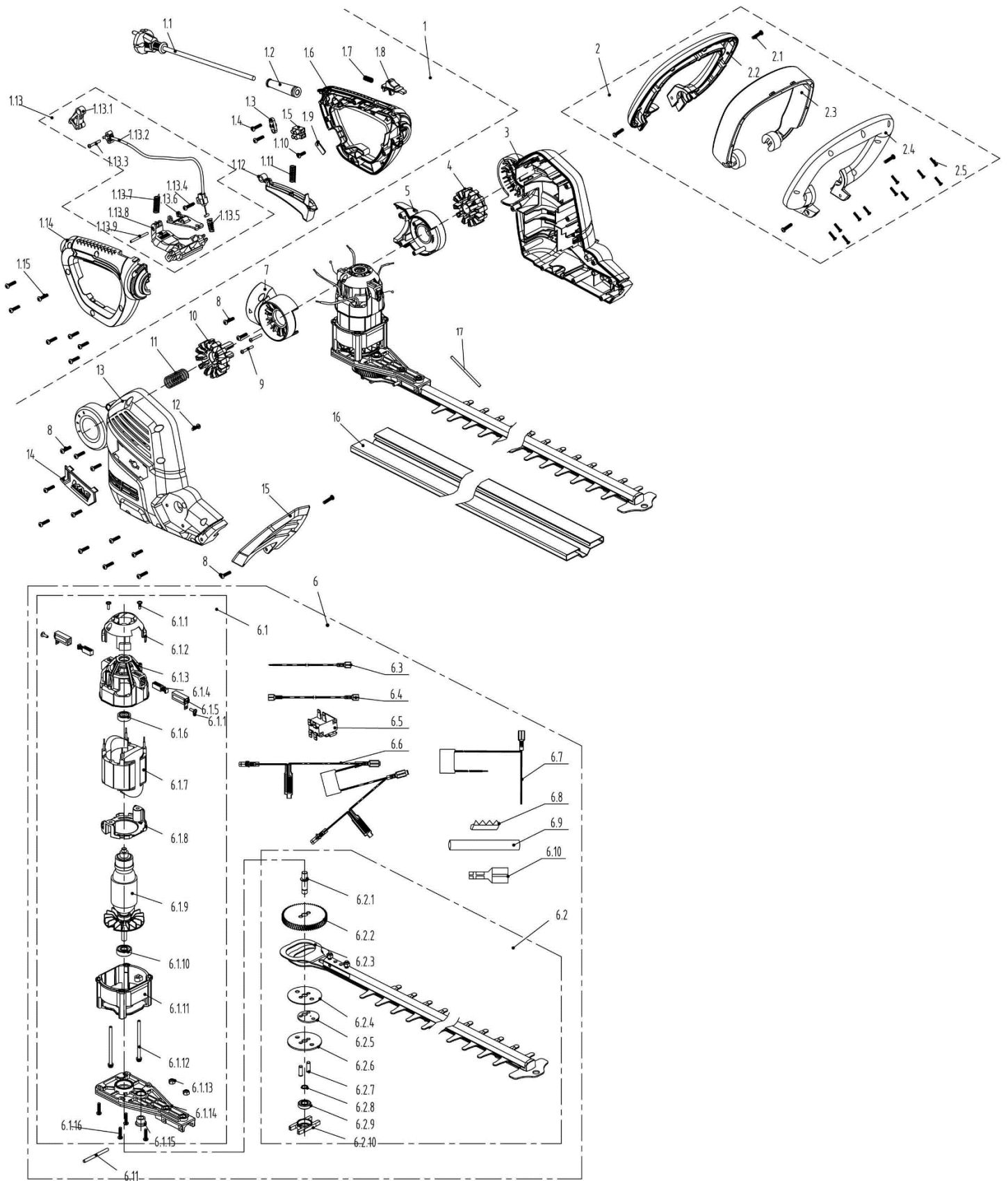
Mac Allister MHTP710



710W Corded Hedge Trimmer

Parts Manual

Exploded Diagram



Parts List

Part ID	Apelson PN	MPN	Part Description	Qty
1	GP0000003424	8440-531402-0001220	THE HANDLE ASSEMBLY	1
1.1	GP0000003336	8422-533501-0000122	POWER LINE	1
1.2	GP0000003337	8332-532101-0100020	CABLE SLEEVE	1
1.3	GP0000002684	8184-282101-0001720	CABLE CLAMP	1
1.4	GP0000002582	8SJAB40-14D	SELF TAPPING SCREW	2
1.5	GP0000001983	8411-522201-0000010	CONNECTOR	1
1.6	GP0000003425	8001-531401-0001220	LEFT THE HANDLE	1
1.7	GP0000003426	8342-691302-0000000	PRESSURE SPRING	1
1.8	GP0000003427	8312-531401-0060620	PUSH BUTTON	1
1.9	GP0000002244	8186-752801-0000010	CLAMP	1
1.1	GP0000002045	8SJAB40-12D	SELF TAPPING SCREW	1
1.11	GP0000003428	8342-481001-0000000	BUTTON SPRING	1
1.12	GP0000003429	8044-531401-0060620	BACK TRIGGER	1
1.13	GP0000003430	8440-531403-0000010	CABLE DRIVE ASSEMBLY	1
1.13.1	GP0000003431	8087-531401-0001720	THE ROTATING ROD	1
1.13.2	GP0000003432	8440-531407-0000020	WIRE CABLE ASSEMBLY	1
1.13.3	GP0000003433	8SJAB29-16D	SELF TAPPING SCREWS	1
1.13.4	GP0000003334	8SJAB40-16B	SELF TAPPING SCREW	1
1.13.5	GP0000003434	8342-530502-0000000	CONICAL SPRING	1
1.13.6	GP0000003435	8044-531402-0000000	IN THE TRIGGER	1
1.13.7	GP0000003428	8342-481001-0000000	BUTTON SPRING	1
1.13.8	GP0000003437	8292-531401-0001720	THE ROTATING BRACKET	1
1.13.9	GP0000003438	8PB30-24B	THE ELASTIC CYLINDRICAL PIN	1
1.14	GP0000003439	8001-531402-0001220	RIGHT THE HANDLE	1
1.15	GP0000003334	8SJAB40-16B	SELF TAPPING SCREW	7
2	GP0000003440	8440-530820-0060620	THE HANDLE ASSEMBLY	1
2.1	GP0000003334	8SJAB40-16B	SELF TAPPING SCREW	4
2.2	GP0000003441	8292-530802-0068820	ON THE HANDLE FRAME	1
2.3	GP0000003442	8003-530801-0060620	THE FRONT HANDLE	1
2.4	GP0000003443	8292-530803-0068820	UNDER THE HANDLE FRAME	1
2.5	GP0000002045	8SJAB40-12D	SELF TAPPING SCREW	12
3	GP0000003444	8006-531401-0001220	LEFT HOUSING	1
4	GP0000003445	8312-531402-0060620	TURN BUTTON	1
5	GP0000003446	8188-531401-0001220	LEFT TURN	1
6	GP0000003447	8440-531404-0000010	THE POWER OUTPUT MODULE	1
6.1	GP0000003448	8440-531405-0000010	MOTOR ASSY'	1
6.1.1	GP0000002314	8SNAB30-10D	FLANGE TAPPING SCREW	4
6.1.2	GP0000003449	8024-530706-0000120	MOTOR COVER	1
6.1.3	GP0000003450	8292-530804-0001720	BRUSH END BRACKET	1
6.1.4	GP0000003451	8406-620103-0000010	CARBON BRUSH	2
6.1.5	GP0000003452	8409-623302-0000000	BRUSH HOLDER	2
6.1.6	GP0000003453	8BC-190706-ST	607 BEARING	1
6.1.7	GP0000003454	8405-530504-0000010	STATOR	1
6.1.8	GP0000003455	8182-530501-0001720	WIND SCREEN	1
6.1.9	GP0000003456	8402-530504-0100010	THE ROTOR ASSEMBLY	1

6.1.10	GP0000002325	8BC-220807-ST03	608Z BEARING	1
6.1.11	GP0000003457	8292-530502-0101720	THE MOTOR BRACKET	1
6.1.12	GP0000003458	8SJAN40-65D	THREE COMBINATION SCREW	2
6.1.13	GP0000002623	8NH-05D	SIX ANGLE LOCK NUT	2
6.1.14	GP0000003459	8292-530701-0000000	HOLDER	1
6.1.15	GP0000003460	8211-535101-0000000	OIL BEARING	1
6.1.16	GP0000002602	8SJAB40-18D	SELF TAPPING SCREW	4
6.2	GP0000003461	8440-531406-0000010	THE POWER OUTPUT MODULE	1
6.2.1	GP0000003353	8085-532401-0000000	OUTPUT SHAFT	1
6.2.2	GP0000003462	8123-535102-0100000	BIG GEAR	1
6.2.3	GP0000003463	8440-531401-0100010	BLADE ASSY'	1
6.2.4	GP0000003464	8325-535101-0100000	BASE PLATE	1
6.2.5	GP0000003465	8124-535102-0100000	WOBBLER	1
6.2.6	GP0000003466	8325-535102-0100000	BASE PLATE	1
6.2.7	GP0000003467	8086-535102-0100000	PIN	2
6.2.8	GP0000003360	8CC-08B	AXIS WITH CIRCLIPS	1
6.2.9	GP0000003361	8BC-190806-ST03	698Z BEARING	1
6.2.10	GP0000003362	8301-534101-0001720	BEARINGS FIXED BLOCK	1
6.3	GP0000003468	8413-531404-0000010	CONNECTING WIRE	1
6.4	GP0000003469	8413-531405-0000020	CONNECTING WIRE	1
6.5	GP0000003470	8042-531401-0000010	MICROSWITCH	1
6.6	GP0000003471	8413-531401-0000010	CONNECTING LINE 1	1
6.7	GP0000003472	8413-531402-0000010	CONNECTING LINE 2	1
6.8	GP0000002054	239-0044	COPPER STRIP	1
6.9	GP0000003473	233-1005	HEAT SHRINKABLE TUBE	2
6.1	GP0000003423	239-0008	FEMALE TERMINAL	1
6.11	GP0000003467	8086-535102-0100000	PIN	1
7	GP0000003475	8188-531402-0001220	RIGHT TURN	1
8	GP0000003334	8SJAB40-16B	SELF TAPPING SCREW	15
9	GP0000003334	8SJAB40-16B	SELF TAPPING SCREW	2
10	GP0000003476	8136-531401-0060620	PASSIVE CHUCK	1
11	GP0000003477	8342-521702-0100000	TURN BUTTON SPRING	1
12	GP0000002045	8SJAB40-12D	SELF TAPPING SCREW	1
13	GP0000003478	8006-531402-0001220	RIGHT HOUSING	1
14	GP0000003479	8181-531491-0068820	LABEL	1
15	GP0000003480	8185-531401-0068820	SHIELD	1
16	GP0000003481	8331-534801-0000020	GUIDE BAR SLEEVE	1